

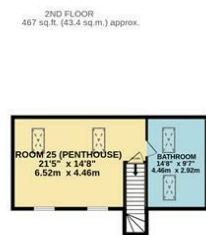
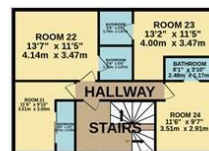
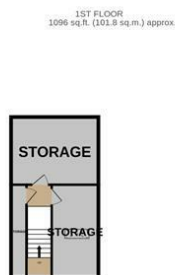
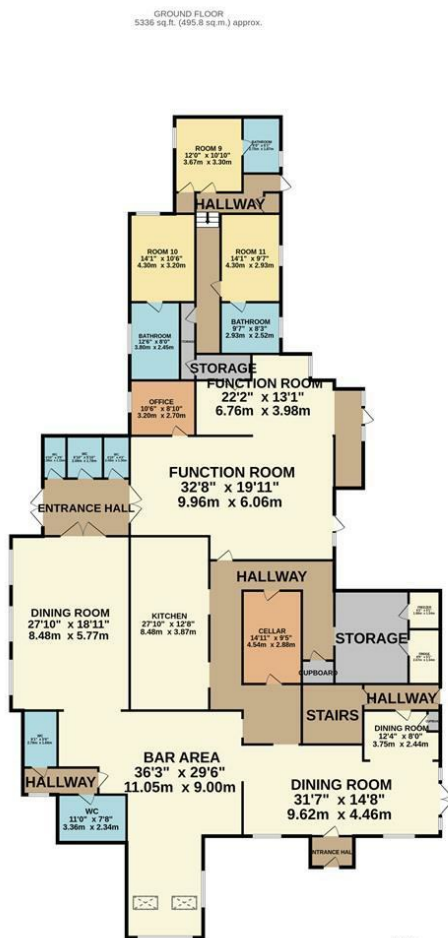


The Marsham Arms Holt Road, Hevingham, Norfolk, NR10 5NP

Beautiful countryside pub, restaurant and 16-bedroom B&B with excellent local reputation, 9000+sq ft of floorspace and 1.25 acres of land

- Successful pub, restaurant and B&B in the heart of the Norfolk countryside.
- Includes 16 lettings rooms, each with en-suites, including a stunning penthouse room above the pub.
- Large dining spaces, bar area and separate function room, catering for 80 additional guests for functions and events.
- Fully equipped, modern and spacious commercial kitchen.
- Large beer garden.
- Ample parking for 40-50 vehicles.
- High rated for both food and drinks.
- Available after 40 years of the same ownership.

£995,000



TOTAL FLOOR AREA: 6899 sq.ft. (641.0 sq.m.) approx.

Whilst every attempt has been made to ensure the accuracy of the floorplan contained here, measurements of doors, windows, rooms and any other items are approximate and no responsibility is taken for any error, omission or mis-statement. This plan is for illustrative purposes only and should be used as such by any prospective purchaser. The services, systems and appliances shown have not been tested and no guarantee as to their operability or efficiency can be given.
Made with Metropix ©2025

Energy Efficiency Rating		
	Current	Potential
Very energy efficient - lower running costs		
(92 plus) A		
(81-91) B		
(69-80) C		
(55-68) D		
(39-54) E		
(21-38) F		
(1-20) G		
Not energy efficient - higher running costs		
England & Wales	EU Directive 2002/91/EC	